

BALDOR® • RELIANCE 

Product Information Packet

UCL345

3-4.5HP,3450RPM,1PH,60HZ,182Z,3634L,OPEN

Part Detail							
Revision:	AS	Status:	PRD/A	Change #:		Proprietary:	No
Type:	AC	Elec. Spec:	36WG2510	CD Diagram:	CD0017A01	Mfg Plant:	
Mech. Spec:	36F549	Layout:	36LYF549	Poles:	02	Created Date:	
Base:	RG	Eff. Date:	02-13-2020	Leads:	2#12 A PH,2#16 B PH 30" LG		Y

Specs			
Catalog Number:	UCL345	Inverter Code:	Not Inverter
Enclosure:	OPEN	KVA Code:	F
Frame:	182Z	Lifting Lugs:	No Lifting Lugs
Frame Material:	Steel	Locked Bearing Indicator:	Locked Bearing
Output @ Frequency:	4.500 HP @ 60 HZ	Motor Lead Quantity/Wire Size:	2 @ 12 AWG, A PH
	3.000 HP @ 60 HZ	Motor Lead Exit:	Pipe Or Pipe Adaptor
Synchronous Speed @ Frequency:	3600 RPM @ 60 HZ	Motor Lead Termination:	Flying Leads
Voltage @ Frequency:	230.0 V @ 60 HZ	Motor Type:	3634L
XP Class and Group:	None	Mounting Arrangement:	F1
XP Division:	Not Applicable	Power Factor:	86
Agency Approvals:	UR	Product Family:	General Purpose
	CSA	Product Type:	FARM DUTY
Auxillary Box:	No Auxillary Box	Pulley End Bearing Type:	Ball
Auxillary Box Lead Termination:	None	Pulley Face Code:	Standard
Base Indicator:	Rigid	Pulley Shaft Indicator:	Tapped & Key
Bearing Grease Type:	Polyrex EM (-20F +300F)	Rodent Screen:	Included
Blower:	None	Shaft Extension Location:	Pulley End
Current @ Voltage:	22.000 A @ 230.0 V	Shaft Ground Indicator:	No Shaft Grounding

Design Code:	L	Shaft Rotation:	Reversible
Drip Cover:	No Drip Cover	Shaft Slinger Indicator:	No Slinger
Duty Rating:	CONT	Speed Code:	Single Speed
Electrically Isolated Bearing:	Not Electrically Isolated	Motor Standards:	NEMA
Feedback Device:	NO FEEDBACK	Starting Method:	Direct on line
Front Face Code:	Standard	Thermal Device - Bearing:	None
Front Shaft Indicator:	None	Thermal Device - Winding:	Normally Closed Thermostat
Heater Indicator:	No Heater	Vibration Sensor Indicator:	No Vibration Sensor
Insulation Class:	F	Winding Thermal 1:	None
		Winding Thermal 2:	None

Nameplate NP1279L										
CAT.NO.	UCL345									
SPEC.	36F549-2510									
HP	3-4.5 AIR OVER									
VOLTS	230									
AMP	22									
RPM	3450									
FRAME	182Z			HZ	60		PH	1		
SER.F.	1.00		CODE	F		DES	L		CL	F
NEMA-NOM-EFF	74		PF	86						
RATING	40C AMB-CONT									
CC						USABLE AT 208V				
DE	6206			ODE	6205					
ENCL	OPEN		SN							

Nameplate NP1263L	
CAT.NO.	UCL345
SPEC.	36F549-2510
HP	3-4.5 AIR OVER
VOLTS	230
AMP	22
RPM	3450
FRAME	182Z
HZ	60
PH	1
SER.F.	1.00
CODE	F
DES	L
CL	F
NEMA-NOM-EFF	74
PF	86
RATING	40C AMB-CONT
CC	USABLE AT 208V
DE	6206
ODE	6205
ENCL	OPEN
SN	

Parts List		
Part Number	Description	Quantity
SA035080	SA 36F549-2510	1.000 EA
RA031107	RA 36F549-2510	1.000 EA
EC1216C06SP	ELEC CAP, 216-259 MFD, 250V, 2.06D X 4.	1.000 EA
HA6021A01SP	ADAPTOR, MACH	1.000 EA
51XB1016A07	10-16 X 7/16 HXWSSLD SERTYB	2.000 EA
11XW1032G06	10-32 X .38, TAPTITE II, HEX WSHR SLTD U	1.000 EA
HW3001B01	BRASS CUP WASHER, FOR #10 SCREW	1.000 EA
36EP3204C01	C00 W/GND	1.000 EA
HA1103A08	RODENT SCREEN, 36 FRAME, OPEN, FRONT END	1.000 EA
51XW1032A06	10-32 X .38, TAPTITE II, HEX WSHR SLTD S	4.000 EA
HW1000A10	#10 FLAT WASHER (SAE)	4.000 EA
HW4500A19	1/4-28X1/4 SLOTTED PLUG F/S	2.000 EA
13XF0832A08	8-32 X.50 PAN HD,SLTD, TYPE F SCREW, ZIN	2.000 EA
SP1008A01	BAFFLE, MODEL 36 & 37	1.000 EA
51XB1016A05	10-16X5/16HX WA SL SR TYB (F/S)	2.000 EA
HW5100A05	WVY WSHR F/205 & 304 BRGS	1.000 EA
36EP3205E00	MASTER DE,206 BRG,1.438SH,GRSR,GRSR,LCK	1.000 EA
HA1103A10	RODENT SCREEN, 36 FRAME, OPEN, PULLEY EN	1.000 EA
51XW1032A06	10-32 X .38, TAPTITE II, HEX WSHR SLTD S	4.000 EA
HW1000A10	#10 FLAT WASHER (SAE)	4.000 EA
HW4500A19	1/4-28X1/4 SLOTTED PLUG F/S	2.000 EA
10XN2520A20	1/4-20X 1 1/4 HEX HD X	2.000 EA
HW1001A25	LOCKWASHER 1/4, ZINC PLT .493 OD, .255 I	2.000 EA
XY2520A12	1/4-20 HEX NUT, DIRECTIONAL SERRATIONS	4.000 EA

Parts List (continued)		
Part Number	Description	Quantity
HW2501D13	KEY, 3/16 SQ X 1.375	1.000 EA
HA7000A01	KEY RETAINER 7/8" DIA SHAFT	1.000 EA
85XU0407S04	4X1/4 U DRIVE PIN STAINLESS	2.000 EA
LB1001	LABEL, GREASE-EXXON POLYREX EM	1.000 EA
WD1000A15	3-520132-2 AMP FLAG (4M/RL NON-CANC/NON-	2.000 EA
MJ1000A02	GREASE, MOBIL POLYREX EM - 124047	0.050 LB
LD5000A45	LEAD ASSY, ML1400DF10 W/#10 RING 36"	1.000 EA
SP5172A43	37 TYPE L TORQ STAT SWITCH LEAD ASSEMBLY	1.000 EA
35CB4802A02SP	CAPACITOR COVER, STAMPED X	1.000 EA
HA3101A25	THRUBOLT 1/4-20 X 11.000 OHIO ROD	4.000 EA
MG1025C02	WILKOFASST SG, 787.105, TAN	0.022 GA
LB1119N	WARNING LABEL	1.000 EA
LC0017	CONN LABEL-1 PHASE-SINGLE VOLT-REV ROTNO	1.000 EA
NP1279L	ALUM FARM DUTY UL CSA CC	1.000 EA
NP1263L	AUX, GP, ALUM, CC, LASER ETCHED	1.000 EA
36PA1000	PKG GRP, PRINT PK1016A06	1.000 EA
MN416A01	TAG-INSTAL-MAINT no wire (1200/bx) 3/19	1.000 EA
PE-0000001	ZRTG PE ASSEMBLY	1.000 EA

Accessories		
Part Number	Description	Multiplier
36-1037	C FACE KIT	A8
36EP1405A09SP	D-FLANGE KIT	A8

AC Induction Motor Performance Data

Record # 10531 - Typical performance - not guaranteed values

Winding: 36WG2510-R001	Type: 3634L	Enclosure: OPAO
-------------------------------	--------------------	------------------------

Nameplate Data				230 V, 60 Hz: Single Voltage Motor	
Rated Output (HP)	3-4.5 AIR OVER			Full Load Torque	6.8 LB-FT
Volts	230			Start Configuration	direct on line
Full Load Amps	22			Breakdown Torque	18 LB-FT
R.P.M.	3450			Pull-up Torque	16 LB-FT
Hz	60	Phase	1	Locked-rotor Torque	14 LB-FT
NEMA Design Code	L	KVA Code	F	Starting Current	115 A
Service Factor (S.F.)	1			No-load Current	9 A
NEMA Nom. Eff.	74	Power Factor	86	Line-line Res. @ 25°C	0.393 Ω A Ph 1.72 Ω B Ph
Rating - Duty	40C AMB-CONT			Temp. Rise @ Rated Load	

Load Characteristics 230 V, 60 Hz, 4.5 HP

% of Rated Load	25	50	75	100	125	150
Power Factor	57	74	83	87	89	90
Efficiency	61.1	73.4	77.5	78.5	77.9	76.1
Speed	3565	3536	3504	3469	3428	3380
Line amperes	10.5	13.4	17.1	21.4	26.3	32.1

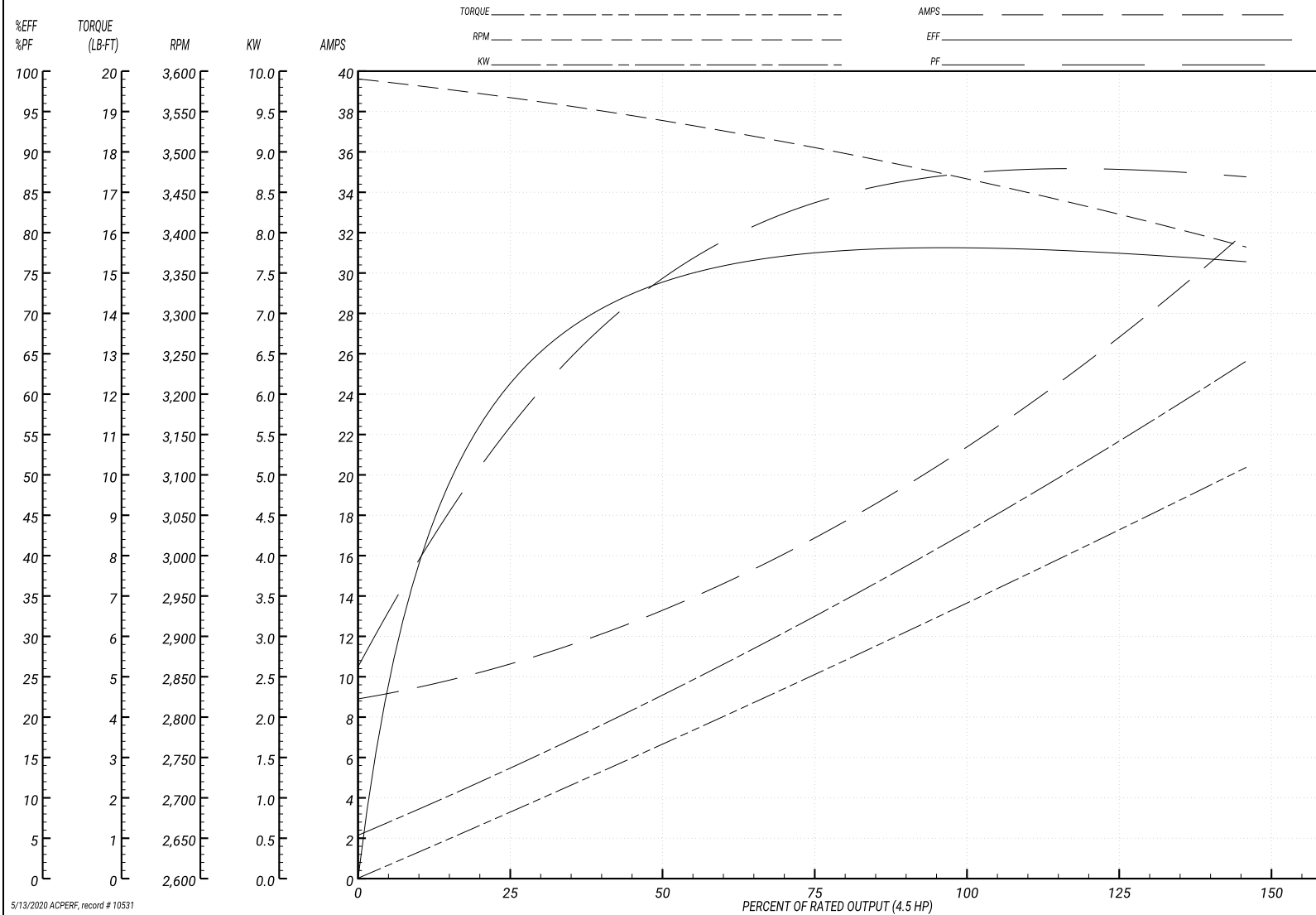
Performance Graph at 230V, 60Hz, 4.5HP Typical performance - Not guaranteed values

ABB Motors and Mechanical Inc.

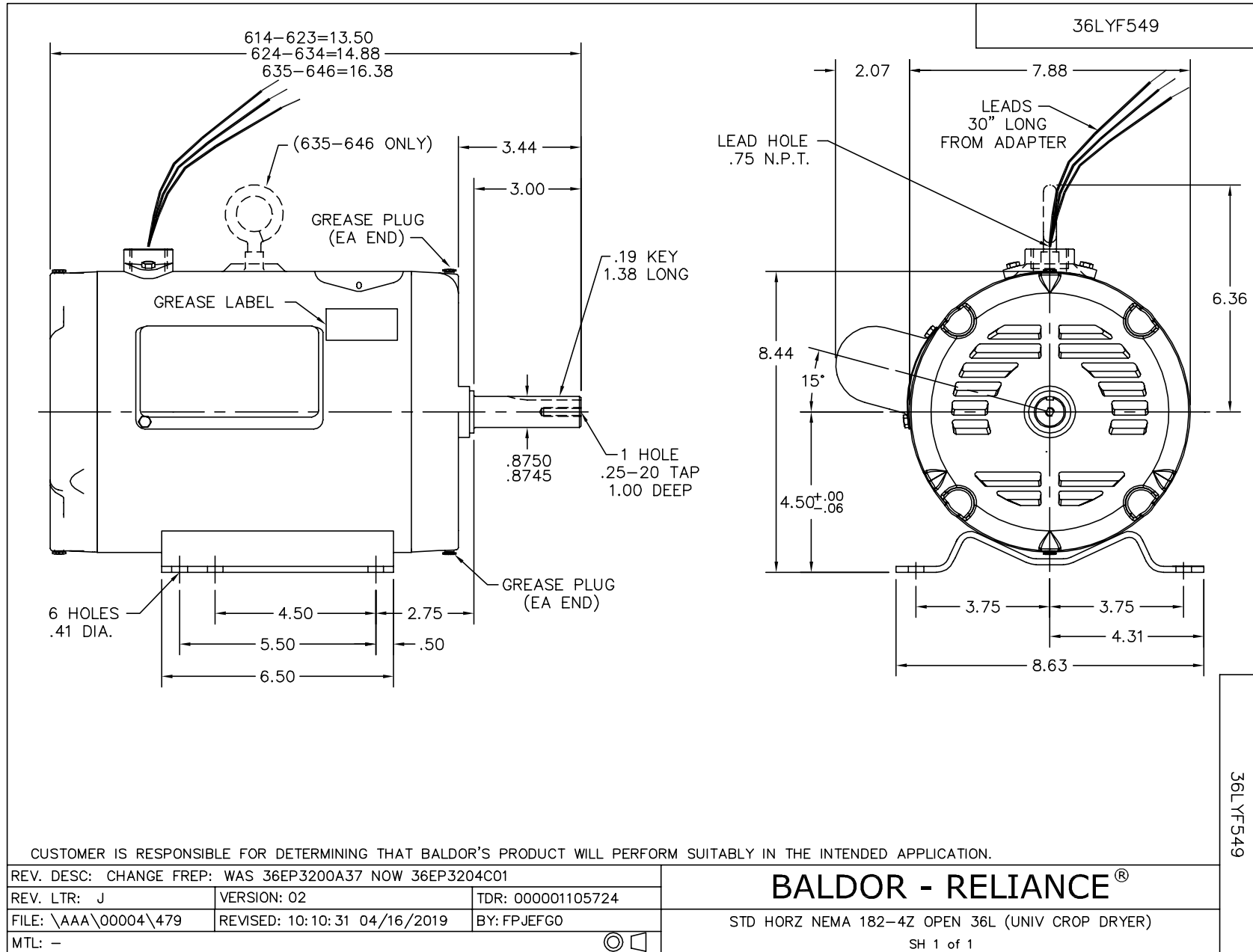
WINDING # 36WG2510

Typical performance - not guaranteed values.

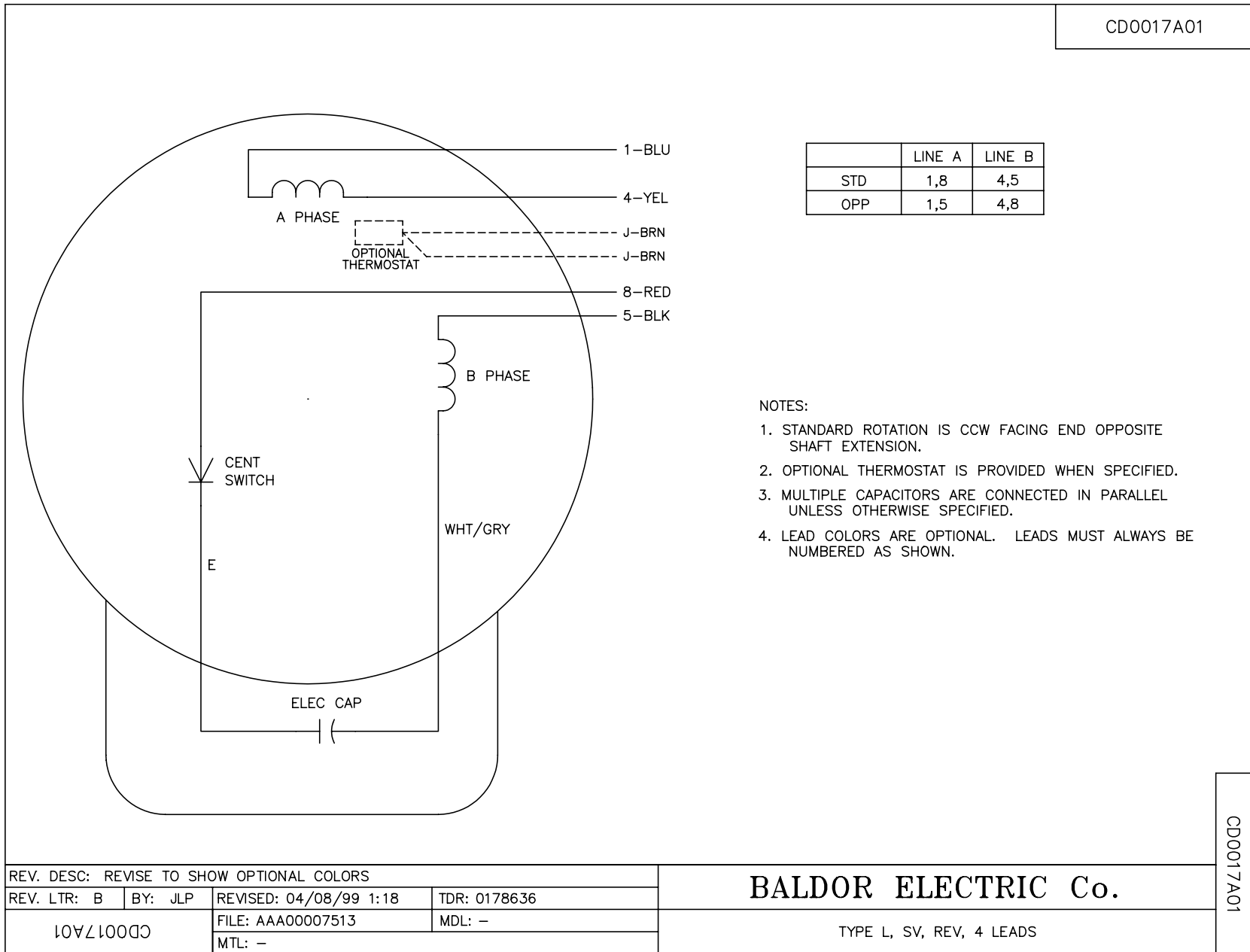
4.5 HP 1 PH 60 HZ 3450 RPM 230 V 3634L
 TORQUES(LB-FT): PO=18 PU=16 LR=14 LRA=115



5/13/2020 ACPERF, record # 10531



CDO017A01



REV. DESC: REVISE TO SHOW OPTIONAL COLORS			
REV. LTR: B	BY: JLP	REVISED: 04/08/99 1:18	TDR: 0178636
CDO017A01		FILE: AAA00007513	MDL: -
		MTL: -	

BALDOR ELECTRIC Co.

TYPE L, SV, REV, 4 LEADS

CDO017A01